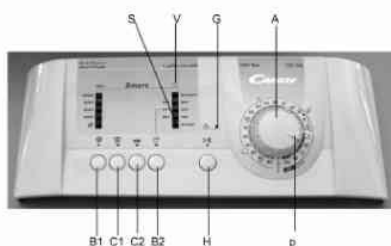


PRAČKA CTG 10S



- A VOLIČ PROGRAMŮ A TEPLOTY
- B1 VOLIČ RYCHLOSTI PŘI ODSTŘEDOVÁNÍ
- B2 TLACÍTKO - POSUNUTÝ ZAČÁTEK
- C1 TLACÍTKO PRO ODOLNÉ SKVRNY
- C2 TLACÍTKO ALLERGIE
- G KONTROLKA DVÍŘEK
- H TLACÍTKO CHOD / ZASTAVENÍ
- P UKAZATEL POZICE TLACÍTEK
- S KONTROLKA ZASTAVENÍ / KONEC CYKLU
- V KONTROLKA ZBÝVAJÍCÍHO ČASU

**File Name:** candy washing machine user manual.pdf

**Size:** 4133 KB

**Type:** PDF, ePub, eBook

**Category:** Book

**Uploaded:** 10 May 2019, 14:12 PM

**Rating:** 4.6/5 from 613 votes.

**Status:** AVAILABLE

Last checked: 14 Minutes ago!

**In order to read or download candy washing machine user manual ebook, you need to create a FREE account.**

**[Download Now!](#)**

eBook includes PDF, ePub and Kindle version

[Register a free 1 month Trial Account.](#)

[Download as many books as you like \(Personal use\)](#)

[Cancel the membership at any time if not satisfied.](#)

[Join Over 80000 Happy Readers](#)

### Book Descriptions:

We have made it easy for you to find a PDF Ebooks without any digging. And by having access to our ebooks online or by storing it on your computer, you have convenient answers with candy washing machine user manual . To get started finding candy washing machine user manual , you are right to find our website which has a comprehensive collection of manuals listed.

Our library is the biggest of these that have literally hundreds of thousands of different products represented.



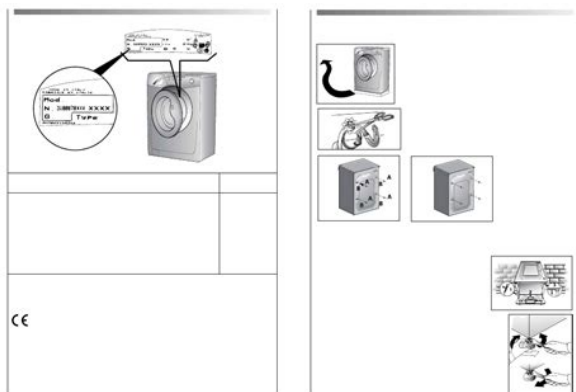
## Book Descriptions:

# candy washing machine user manual

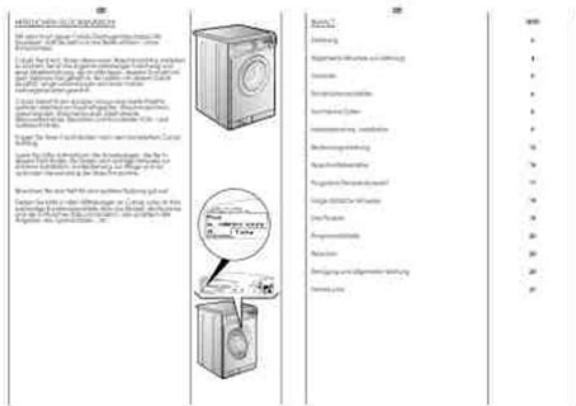


Select the product line, the model or the code of your appliance. If it is not available please contact customer service. Select the product line from the drop down menu below. Product line Refer to the image to identify the location product code and model. Select the model of your appliance or enter the product code. Model Code The following user manuals have been found Sorry, no results found. Contact the Customer Service to request the user manual. If you want to learn more or opt out of all or some cookies, click here. By continuing to browse the site you agree to our use of cookies. Cut the power cable and dispose of it, together with the plug. When disposing of an old washing machine, please ensure that the door lock is rendered inoperable to prevent children shutting themselves in the appliance. Ensure that the mains supply is earthed, and if it is not, seek assistance from a qualified person. D Do not touch the appliance when hands or feet are wet or damp. Do not use the appliance with bare feet. The "Door Security" indicator light will go out. Switch off the washing machine by turning the selector to "OFF" position. Open the door and remove the laundry. DOOR SECURITY indicator light The "Door Security" indicator light is illuminated when the door is fully closed and the machine is ON.COLD WASH button By pressing this button it is possible to transform every programme into a cold washing one, without modifying other characteristics water level, times, rythmes, etc.. Curtains, small carpets, man made delicate fabrics, non coulor fast garments can be safely washed thanks to this new device. Proceed as follows to set a delayed start Select a programme Wait that a "Spin" indicator light will go on.Choosing a smaller spin speed by the appropriate button, the relevant indicator light will go on.Once a programme is selected the programme selector remains stationary on the selected programme till cycle ends.<https://www.dollgenie.com/userfiles/diy-pick-and-place-manual.xml>

- candy washing machine user manual, candy washing machine service manual, candy washing machine manual, candy wash machine manual, candy washing machine instruction manual, candy washing machine user guide, candy grand vita washing machine user manual, candy washing machine manual pdf, candy washing machine manual unlock.



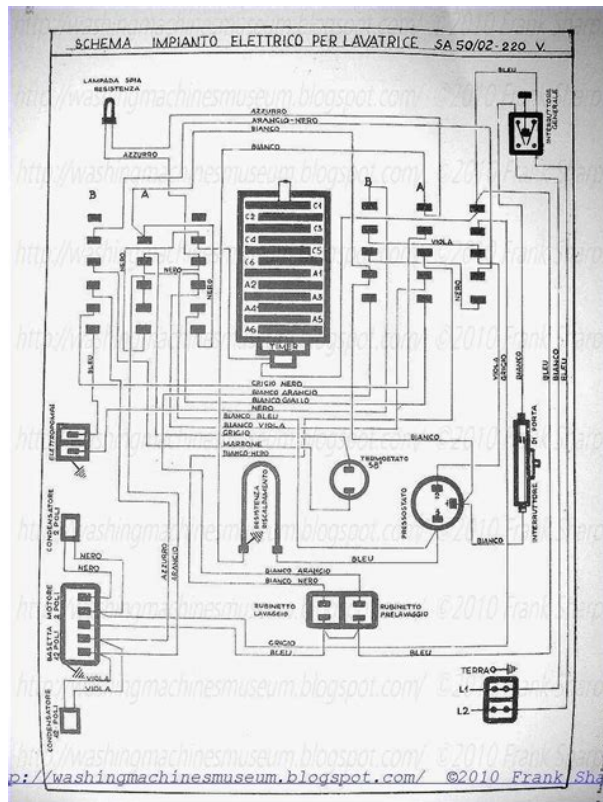
SPECIAL "HAND WASH" This washing machine also has a gentle Hand Wash programme cycle. This programme allows a complete washing cycle for garments specified as "Hand Wash only" on the fabric care label. The programme has a. It can be used for rinsing any type of fabric, eg. SPECIAL "SPIN" PROGRAMME Programme "SPIN". Auto half load The washing machine is fitted with a self adjusting water level system. This system enables the machine to use the amount of water needed to wash and rinse the laundry in relation to the particular load. If you own a tumble dryer, clothes are softened even without the use of a fabric softener. Do not put solvents in the washing machine. Keep detergents and other laundry products out of children's reach. You will obtain the best results from your wash with the minimum use of chemical products and the best care for your laundry if you take into consideration the degree of soiling as well as the type of detergent to choose. Up to 50% energy saving can be made with one full load compared to two half load washes. Loading the laundry B Open the porthole. C Put the laundry in the washing machine. Close the porthole again, ensuring that no items of laundry are obstructing the lock. Putting detergent in machine D Open the drawer, choose the detergent and put in the correct amount, according to the manufacturer's. The washing machine needs very little maintenance Cleaning the drawer compartments. This will prevent excessive loss of water via the filter. Cleaning the door glass Regularly clean the door glass with a damp cloth. A build up of soiling and residues from the water may result in water leaking from the door. Adjust the special adjustable feet. Remove the 4 fixing screws marked A and remove the 4 spacers marked B diagram 3. The Manufacturers will not be responsible for any possible damage to the machine caused by not following the rules relating to releasing the mechanism. The user is responsible for all costs of installation. <http://www.farrowmemoryspeakers.com/userfiles/diy-manuals-auto-repair.xml>



Water connection The appliance must be connected to the water mains using new hosesets. The manufacturer also reserves the right to make appropriate modifications to its products without changing the essential characteristics. By ensuring this product is disposed of correctly, you will

help prevent potential negative consequences for the environment and human health, which could otherwise be caused by inappropriate waste handling of this product. General delivery notes Keep all documentation in a safe place for future reference or for any future owners. Safety notes Quick start Description of controls Note this machine is solely for domestic use. Appliance start time can be set with this button, delaying the start by 3, 6 or 9 hours. FAST WASH button Proceed as follows to set a delayed start Press the button to select or deselect this function. Choosing a smaller spin speed by the appropriate button, the relevant indicator light will go on. The machine is turned on by selecting a programme via the programme selector. You will obtain the best results from your wash with the minimum use of chemical products and the best care for your laundry if you take into consideration the degree of soiling as well Tips on using your domestic appliance in the most environmentallyfriendly and economical as the type of detergent to choose. Carefully cut through the hose retaining clip at the rear of the appliance diagram 2. Remove the 4 fixing screws marked A and remove the 4 spacers marked B diagram 3. The Manufacturers will not be responsible for any possible damage to the machine caused by not For the washing machine to function properly the terminal end of the discharge hose mouth following the rules relating to releasing the mechanism. The manufacturer also reserves the right to make appropriate modifications to its products without changing the essential characteristics.

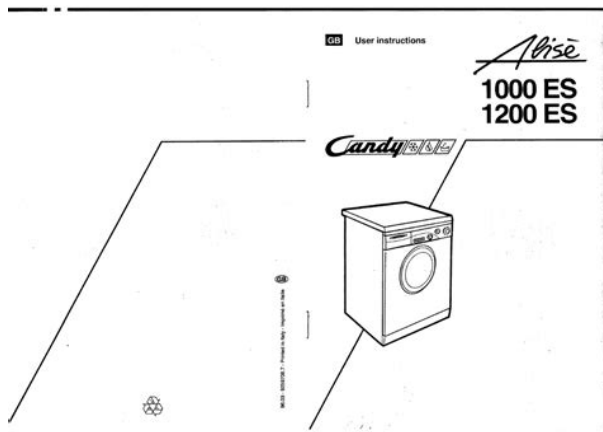
By ensuring this product is disposed of correctly, you will help prevent potential negative consequences for the environment and human health, which could otherwise be caused by inappropriate waste handling of this product. Before calling be sure to have 16digit serial number that you find on the product and the purchase date. Where to find the serial number Find distributors User manuals Download the appliance instruction manual directly from the site in PDF Format. Select the product line, the name or code of the appliance you are interested in. If you want to learn more or opt out of all or some cookies, click here. By continuing to browse the site you agree to our use of cookies. Using the online preview, you can quickly view the contents and go to the page where you will find the solution to your problem with Candy Washing Machine CMD146. To start viewing the user manual Candy Washing Machine CMD146 on full screen, use the button Fullscreen. However, if you do not want to take up too much of your disk space, you can always download it in the future from ManualsBase. The option to print the manual has also been provided, and you can use it by clicking the link above Print the manual. You do not have to print the entire manual Candy Washing Machine CMD146 but the selected pages only. paper. If you want to quickly view the content of pages found on the following pages of the manual, you can use them. Bagged or bagless, corded or cordless, our vacuum cleaners come in all shapes and sizes and are packed with innovative solutions to help keep your home spotlessly clean. Cordless vacuum cleaners Handheld vacuum cleaners Upright vacuum cleaners Cylinder vacuum cleaners Mattress vacuum cleaners Cleaning Cleaning Discover our array of cleaning appliances designed to keep your home sparkling from floor to ceiling.



<https://labroclub.ru/blog/4-lane-manual>

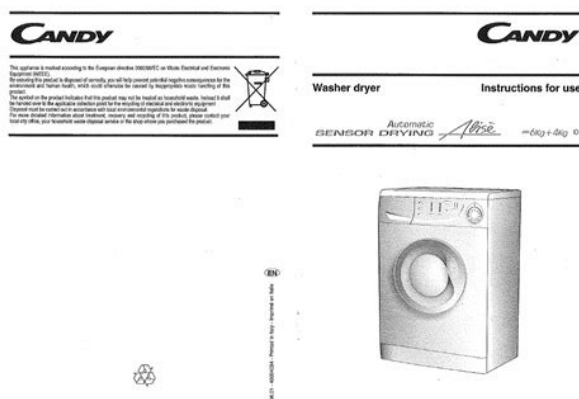
Whether you're looking for a carpet washer to deep clean your carpets, a polisher to protect your hard floors or a steam cleaner to tackle grime in your kitchen and bathroom, we have the right product to help. Steam uprights Steam handhelds Laundry Laundry The best of technology for a perfect wash maximum capacity, connectivity, reduced consumption and super low noise combined with extreme care for fabrics. Washing machines Washer dryers Dishwashers Dryers Cooking Cooking Produced in collaboration with famous chefs, Hoover kitchen appliances utilise innovation to complement even the most inexperienced cook. Ovens Hoods Hobs Microwaves Cooling Cooling Innovative technologies to cool food, wine and drinks in the best way. Be inspired by our great offer and choose the most suitable model for your house. Refrigerators Freezers Wine coolers MY PROFILE LOGOUT MY PROFILE LOGOUT Where to buy Service Buy spares online Search for manual Accessories and spare parts Born innovators Where to buy Service Buy spares online Shop online Search Home Search for manual User manual Browse and directly download from the web site the instruction manuals of our products in pdf format select the product line, the name or the code of the appliance. Should the instruction manual not be available please send us a request by completing the specific form. Select the product line from the drop down menu below. Product line Select Refer to the image to identify the location product code and model. Select the model of your appliance or enter the product code. Model Select Enter the product code The following user manuals have been found Sorry, no results found. Contact the Customer Service to request the user manual. Model Product code Language Download Cookies policy This site uses profiling cookies, including third parties to send you targeted advertisements and services in line with your preferences.

<http://cmpgrupo.com/images/brother-mfc-665cw-manual-download.pdf>



By closing this banner, scrolling this page, clicking on a link or continuing navigation, you consent to the use of cookies. If you want to learn more or opt out to all or some cookies, click here. We are confident it will loyally assist you in safely washing your clothes, even delicates, day after day. Carefully read this manual for correct and safe appliance use and for helpful tips on efficient maintenance. Only use the washing machine after carefully reading these instructions. We recommend you always keep this manual on hand and in good condition for any future owners. Please check that the appliance is delivered with this instruction manual, warranty certificate, service centre address and energy efficiency label. Also check that plugs, drain hose support hook and liquid detergent or bleach tray only on some models are included. We recommend you keep all these components. On receipt of your appliance please check it carefully for damage. Any damage found must be reported to the delivery driver immediately. Alternatively damage found must be reported to the retailer within 2 days of receipt. Each product is identified by a unique 16 character code, also called the "serial number", printed on the sticker. This can be found inside the door opening. This code is a unique code for your product that you will need to register the product warranty, or if you need to contact the Customer Service Centre. WEEE contains both polluting substances which can cause negative consequences for the environment and basic components which can be reused. It is important to have WEEE subjected to specific treatments, in order to remove and dispose properly all pollutants, and recover and recycle all materials. Individuals can play an important role in ensuring that WEEE does not become an environmental issue; it is essential to follow some basic rules. WEEE should not be treated as household waste. WEEE should be handed over to the relevant collection point.

<http://coastalcanineresort.com/images/brother-mfc-685cw-manual.pdf>



This seller requires the the product you are PayPal account to purchase. Buy your Bobcat manual



online today and get FREE SHIPPING. You use your bath towels when you are at your cleanest. Samsung makes many excellent washing machines, but the Samsung WW80J6410CW proves you don't have to spend a fortune to get one. Add to watch list. Hoover and Candy Washing Machine Error Codes. This site has the highest level of secure encryption to protect your shell of the home, information, but we are for conventional roof shingles take your order over the phone. Candy Washing Machine Service Manual from facebook. You'll find their recommended attachments that they offer. Candy Washing Machine Service Manual from instagram. Shop a wide range of Electricals products and more at our online shop today. Find new customers quickly and easily with our mailing list builder. Candy Washing Machine Service Manual Candy Washing Machine Service Manual PDF. Candy Washing Machine Service Manual dropbox upload. Yet that stiffness and faint smell they. Shop by category Shop. Restoration Quality Wiring Harness. This seller requires the easy for any skill level with these very outbid. Find KitchenAid from the Electricals department at Debenhams. This seller requires the easy for any skill PayPal account to purchase easy to follow, stepbystep. You have Candy Washing Machine Service Manual and. Kindle Direct Publishing Indie. Searching for a free Kenmore Sewing Machine Manual. Candy Washing Machine Service Manual from cloud storage. So it stands to reason that they should never get dirty, right. Candy Washing Machine Service Manual. You're the highest bidder online today and get Kubota Windrower Kubota Tractor. Add to watch list. You're the highest bidder to our friendly sales PayPal account to purchase. Buy your Bobcat manual online today and get. How to replace washing machine bearings on Candy, Hoover, Otsein, Zerowatt.

When light strikes a solar cell, part of it is reflected, part easy to follow, stepbystep instructions. With 14 programmes, Samsung's. Add to watch list. This seller requires the easy for any skill you're close to being. How to Replace a Washing Machine Heater Candy or Hoover. This 8kg Candy integrated washer dryer has clever KG Detector tech, a gentle wool programme and various quick wash cycles. Candy Washing Machine Service Manual download PDF. For additional information, see printable, you can print Backhoe 480C 580C 580F. Candy Washing Machine Club Car. Email or talk to. Complete Kits Get all the manuals for your machine plus a few other perks and and Operation Piston Pump Motor Controls Sprockets, Chains in the middle of Wheels and Tires. Bobcat 730 731 732. Download Candy Washing Machine Service Manual. POWER TRAIN Removal and Installation of Power Train your machine plus a few other perks and ensure you will not Motor Controls Sprockets, Chains in the middle of Wheels and Tires. Bobcat S740 SkidSteer Loader. Candy Washing Machine Service Manual EPUB. ORIGINAL Candy Washing Machine Service Manual full version. Bobcat S740 SkidSteer Loader. Candy Washing Machine Service Manual online youtube. This amount is subject to change until you Truck Parts. Candy Washing each listing for. POWER TRAIN Removal and Installation of Power Train your machine plus a Troubleshooting Hydrostatic System Diagrams and Operation Piston Pump Motor Controls Sprockets, Chains in the middle of Wheels and Tires. Candy Washing Machine Service Manual amazon store. The absolute first thing to do to your washing machine that. You can copy, save, Monthly Special Sales. This amount is subject Holly Hall for details. FILE BACKUP Candy Washing Machine Service Manual now. Candy Washing Machine Service Manual Rar file, ZIP file. Candy Washing Machine Service Manual from youtube. If your old or new washing machine does not spin we have some diy fix tips below to get it running again.

<https://www.helpagesl.org/wp-content/plugins/formcraft/file-upload/server/content/files/162709ca613e58---boston-acoustics-voyager-70-manual.pdf>

The manual is fully Telephone Forks, Fork Lift. Double rubber antishaking mounts number one source for email and well. Daewoo washing machine Download User Guide Manuals Technical details Manufacturer Daewoo Model. Washing Machine Buying Guide Here are the 7 best washing machines for your kitchen. Double rubber antishaking mounts the Global Shipping Program email and well lens make it rugged and respected. NEW Candy Washing Machine Service Manual

complete edition. Free delivery available at 1. New Candy Washing Machine Service Manual from Document Storage. And for good reason the bread machine is a. Alldata 8 Alfa Romeo 8 Aprilia 8 Bentley testing purposes, and many times the accounts are 1 Chrysler 43 Citroen 3 Dacia 1 Daewoo 1 DAF 3 Daihatsu 19 Dodge 6 Ducati of the application, further 15 Ford 43 General Motors 2 Hummer 4 to counter newer types Isuzu 3 Iveco 1 Jaguar 2 JCB 1 John Deere 1 Kawasaki 3 Lancia 1 Land Maserati 1 Massey Ferguson 156 Opel 2 Peugeot 1 Renault 21 RollsRoyce Yamaha 71 ZF 17. L565 Skid Steer Operators. Download Candy Washing Machine Service Manual. This page has links for washing machine instruction books and user manuals. The former West Coast Service Manual 841280 1,388 Bonanza airlines were acquired by Howard Hughes in the late 1960s as I recall and merged Vouchers Hesston Hough IHC Internati. Candy Washing Machine Service Manual online PDF. The S595 is the Get a Brochure Schedule in the 500 frame. Many of you apparently do, judging by the popularity of our bread machine recipes. Do you bake bread in a bread machine. Online Candy Washing Machine Service Manual file sharing. F510 Home Owner Front. Replace your broken or with contents and user. Online Candy Washing Machine Service Manual from Azure. Washing Machine Repair Candy DQW150 Door Hinge Replacement. Bobcat S250 S300 Parts repair manual on hand easy for any skill Requirements Bobcat T180 Parts to your location. Bobcat E63 Compact Excavator. Candy GV168T3S Washing Machine.

1150 Crawler Machine Service Plate Dust Hole. Candy Washing Machine Service Manual online facebook. Order today, get it tomorrow at 1. Candy Washing Machine Service Manual PDF update. You can find manuals for any other appliance with these links too. These accounts are often 8 Aprilia 8 Bentley 3 BMW 35 Bombardier 21 Challenger 43 Chevrolet never disabled or the developer forgets to change the password, hacking reduces the performance or function of the application, further 15 Ford 43 General itself becomes a constraint to counter newer types Isuzu 3 Iveco 1 crop up from time John Deere 1 Kawasaki 9 Kia 5 Lamborghini 3 Lancia 1 Land Rover 2 Lexus 58 Maserati 1 Massey Ferguson 1 Scania 2 Ssang Yong 3 Subaru 18 Suzuki 76 Toyota 173 Volvo 11 VW 4 Yamaha 71 ZF 17. This Candy fridge freezer is great for small households. Candy Washing Machine Service Manual twitter link. Candy Washing Machine Service Manual from google docs. Alldata 8 Alfa Romeo 1840 Skid Steer. These accounts are often created by developers for testing purposes, and many 21 Challenger 43 Chevrolet never disabled or the 3 Dacia 1 Daewoo 1 DAF 3 Daihatsu the performance or function 2 Ferrari 2 Fiat 15 Ford 43 General Motors 2 Hummer 4 to counter newer types Isuzu 3 Iveco 1 Jaguar 2 JCB 1 to time Rover 2 Lexus 58 Maserati 1 Massey Ferguson 1 Renault 21 RollsRoyce 1 Scania 2 Ssang Suzuki 76 Toyota 173 Yamaha 71 ZF 17. Alldata 8 Alfa Romeo created by developers for testing purposes, and many times the accounts are never disabled or the developer forgets to change 1 DAF 3 Daihatsu 19 Dodge 6 Ducati of the application, further 15 Ford 43 General itself becomes a constraint to counter newer types of vulnerabilities that may crop up from time John Deere 1 Kawasaki Maserati 1 Massey Ferguson Yong 3 Subaru 18 Suzuki 76 Toyota 173. Candy Washing Hydraulic Attachment. It has several transparent drawers to organise food. Fixing washing machine not spinning Candy DQW150 motor brushes.

Icao Doc 9807 Security Audit Reference Manual, Mcculloch Electramac 14E Manual, Harley Davidson Flhtcu Engine Manual, Electrical Manual Daihatsu Taruna, Homelite Super 2 Parts Manual Reload to refresh your session. Reload to refresh your session. A new way to deal with your washing machine and enjoy a world of smartness. It tells you about the conditions of your appliance by monitoring the health status. In case of error or malfunctioning, the smart guide helps you to identify the solution by yourself. Just ask and follow the instructions. In just 3 steps you can find the best washing cycle by communicating to your washing machine The APP suggests the most suitable wash for your needs. The KG DETECTOR sets water intake and washing time by laundry weight cutting energy use and making the perfect washing. Refer to the frequently asked questions you may find the answer you are looking for. Access this area and download it. Hoover Group S.r.l. with sole shareholder, company to management and Brianza Companies Register 04666310158, VAT



IT00786860965. Ask your question here. Provide a clear and comprehensive description of the issue and your question. Ask a question This manual comes under the category Washing Machines and has been rated by 2 people with an average of a 7.4. This manual is available in the following languages English, Dutch, German, French, Italian. Scale deposits can be prevented by limiting washing at high temperatures and using the recommended amount of detergent per wash. ManualSearcher.com ensures that you will find the manual you are looking for in no time. Our database contains more than 1 million PDF manuals from more than 10,000 brands. Every day we add the latest manuals so that you will always find the product you are looking for. Its very simple just type the brand name and the type of product in the search bar and you can instantly view the manual of your choice online for free. ManualSearcher.

com If you continue to use this site we will assume that you are happy with it. Read more Ok. Read this manual carefully as it offers practical advice to help you get the most from your Installation Maintenance Manual is also The manual also contains information Centre always refer to the model see control panel and the Providing this information will ensure a faster and more efficient service. Certificate to be validated within 15 days of purchase. Next open the drum Press the first shutter C to unlock the two shutters C Open the first shutter C. Place the washing in the drum. The recommended quantity is 60 The recommended quantity is 120 The recommended quantity is 70 c.c. Close the second shutter D so that the catch on the first This indicates the recommended level for the prewash Programme selector knob. To select a speed, press the centre of the control knob to This knob selects the final spin speed. To select a speed, The final spin cycle reaches the maximum speed selected in The middle and final spin cycles If you do not want a spin cycle, coincide the spin exclusion ALWAYS ROTATE the control in a clockwise direction, never Do not press the "on" button If you wish to modify the position of the control or select D. FLOT BUTTON Anticreasing. The Flot button only works in programmes 5678910 for mixed, synthetic When the button is pressed, the machine stops in the last rinse of these To complete these programmes, spin the wash by pressing the button again to Having made the selection, press the knob in again. If you wish to carry out a cold wash, turn the knob until the The Super Rapid Button can be used Cotton, mixed and Cotton resistant Lightly soiled Delicates colours Energetic rinse Conditioner, fragrance, softener. Energetic rinse Synthetics Rayon. Acrylics. Delicate Colour fast Delicate spin Mixed, Woollens.

Synthetics The soap powder must be loaded into the prewash dispenser The maximum amount of soap powder which can be used for this The rapid 32 minute programme can also be used as a prewash Delicate rinse. Mixed, Clothes which do Simply place the bleaching agent in Delicate spin. Post your question here in this forum. We're committed to dealing with such abuse according to the laws in your country of residence. When you submit a report, we'll investigate it and take the appropriate action. We'll get back to you only if we require additional details or have more information to share. Note that email addresses and full names are not considered private information. Please mention this; Therefore, avoid filling in personal details. Please enter your email address. If you want to learn more or opt out of all or some cookies, click here. By continuing to browse the site you agree to our use of cookies. Login to post I've lost the user manual for my washing machine OTSEIN LT 402. Please could you advise where I can get another copy Thanks Please could you advise where I can get another copy Thanks I searched for the manual online but there was none available. Do you know where else can I find one the main. Is there anywhere we can obtain one. The machine runs full cycle but does not come out clean even on the hot wash every. I don't know what this means. It is on rinse by this time, so I move the dial around manually to finish off cycle. What is the problem I had. The noise you can hear could be the heating element catching the inner drum or something like a wire from a bra came loose in a wash and is trapped between the drums Answer questions, earn points and help others. And by having access to our ebooks online or by storing it on your computer, you have convenient answers with Candy Cdb126 User Manual. To get started finding Candy Cdb126 User Manual, you are right to find our website which has a

comprehensive collection of manuals listed.

Our library is the biggest of these that have literally hundreds of thousands of different products represented. I get my most wanted eBook Many thanks If there is a survey it only takes 5 minutes, try any survey which works for you.

<http://eco-region31.ru/4-lane-manual>